

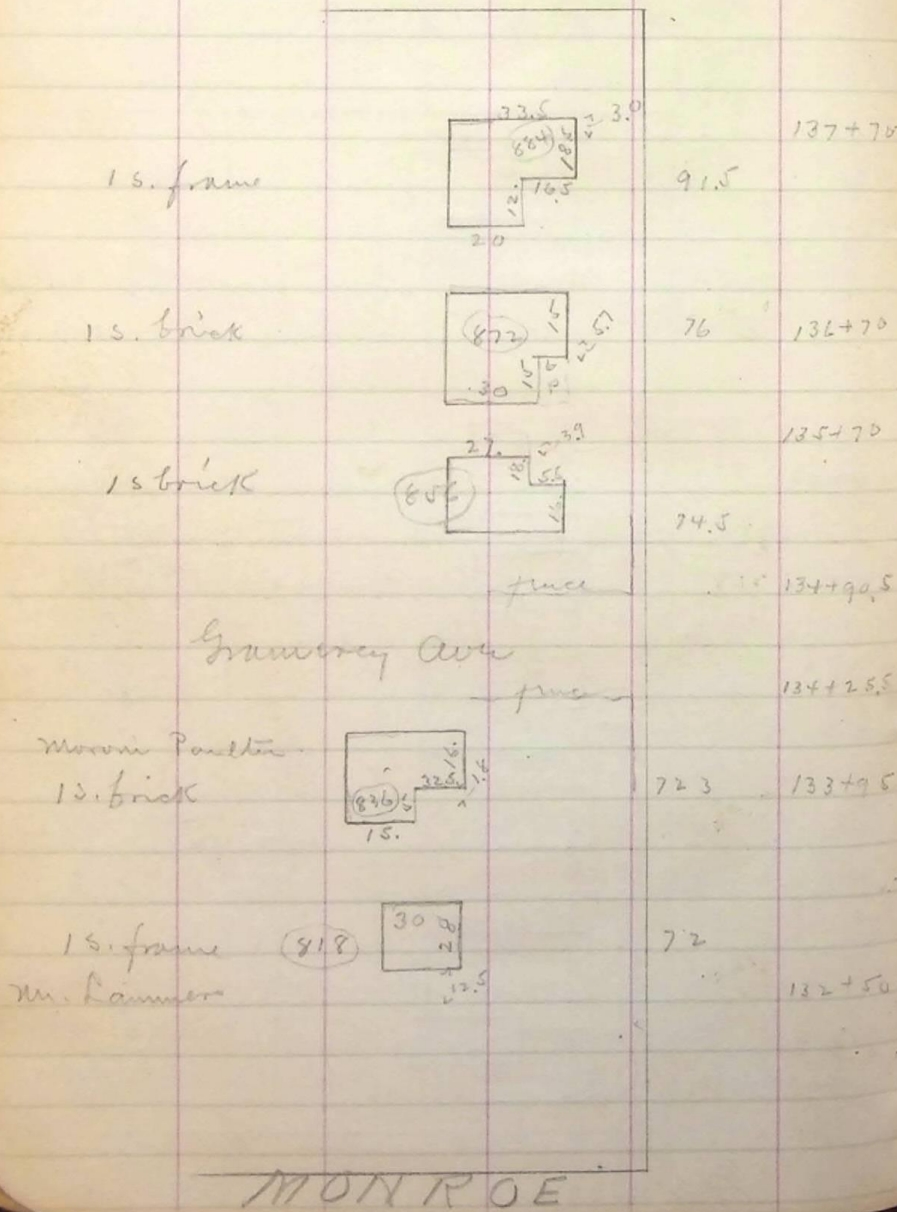
26th Street - Location of

Buildings

67
3
60
92
3
325
175

QUINCY

AVENUE



137+70

136+70

135+70

134+90.5

134+25.5

133+95

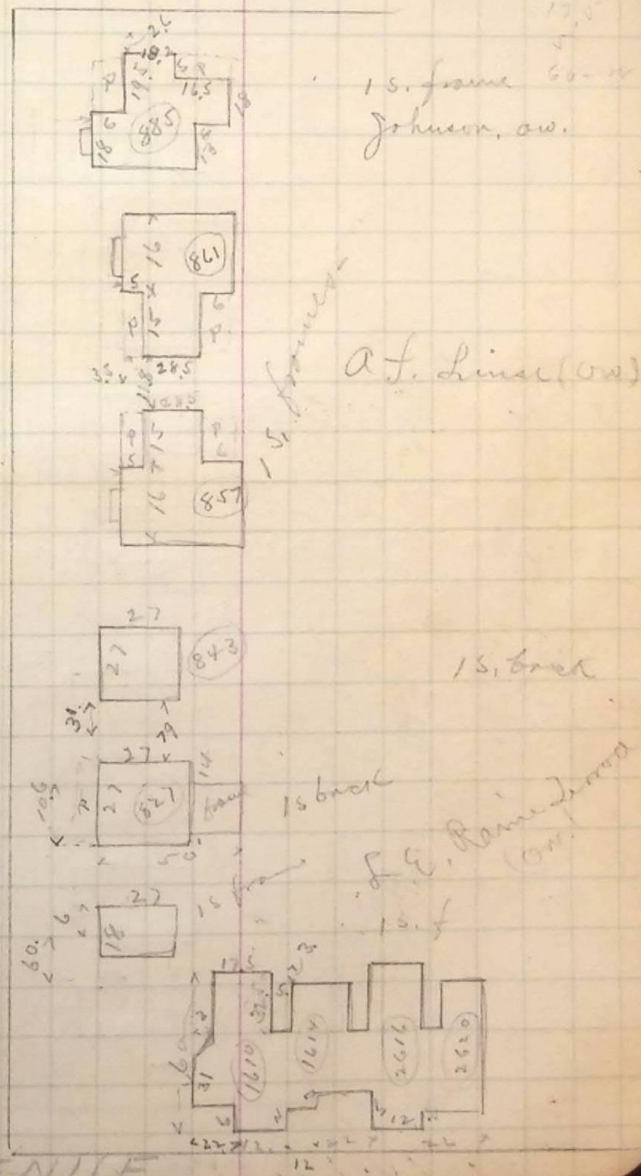
133+30

132+50

132+50

125.8

AVENUE



1 s. frame 60- Johnson, av.

A. L. Linn (av)

1 s. brick

1 s. brick
S. E. Rainey (av)

1 s. f

MONROE